

$$1) 5.00g \times \frac{1 \text{ mol}}{58.5g \text{ (NaCl)}} = .0855 \text{ mol}$$

$$\frac{.0855 \text{ mol}}{2.50L} = 0.0342 \text{ M}$$

May 27-11:00 AM

$$150.0g \times \frac{1 \text{ mol}}{180.0g \text{ (C}_6\text{H}_{12}\text{O}_6)} = .833 \text{ mol}$$

$$\frac{.833 \text{ mol}}{1.25 \text{ kg}} = 0.667 \text{ m}$$

$$\Delta T_f = K_f \cdot m$$

$$\frac{1.24^\circ\text{C}}{1.8^\circ\text{C}} = 1.8^\circ\text{C} \cdot 0.667 \text{ m}$$

$$-1.24^\circ\text{C}$$

May 27-11:03 AM

↑ temp
 ↑ pressure
 ↑ surface area
 ↑ concentration
 add catalyst

May 27-11:08 AM

- $\text{pH} + \text{pOH} = 14$
- $.250g \times \frac{1 \text{ mol}}{36.5g \text{ (HCl)}} = .00685 \text{ mol}$

HCl

$$\frac{.00685 \text{ mol}}{2.5L} = .00274 \text{ M}$$

$$\text{pH} = 2.56 \quad (-\log)$$

May 27-11:09 AM

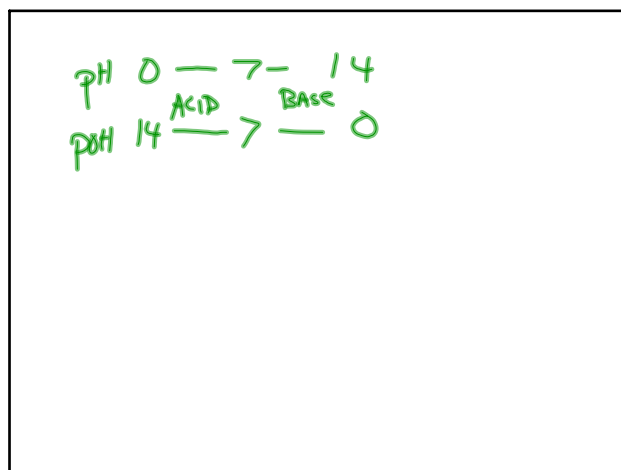
- $5.00g \times \frac{1 \text{ mol}}{40.0g \text{ (NaOH)}} = .125 \text{ mol}$

$$\frac{.125 \text{ mol}}{7.24L} = .0173 \text{ M} \quad (-\log)$$

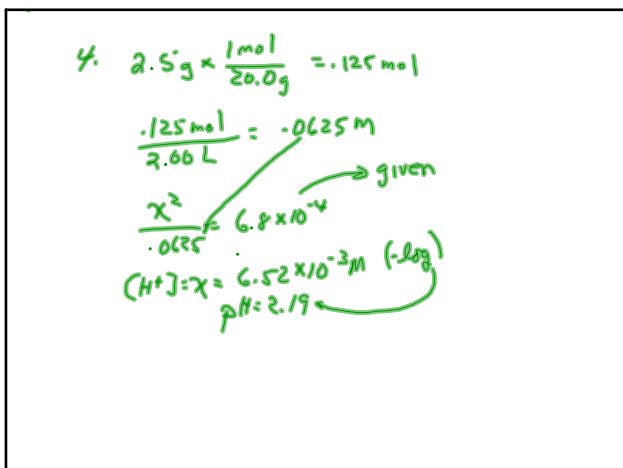
NaOH → pOH = 1.53

$$\text{pH} = 12.47$$

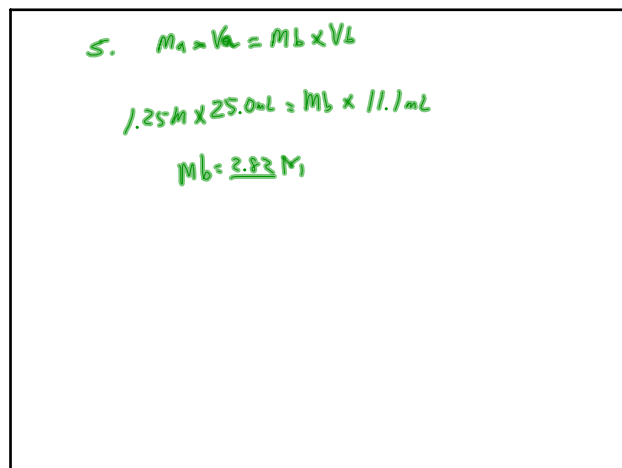
May 27-11:12 AM



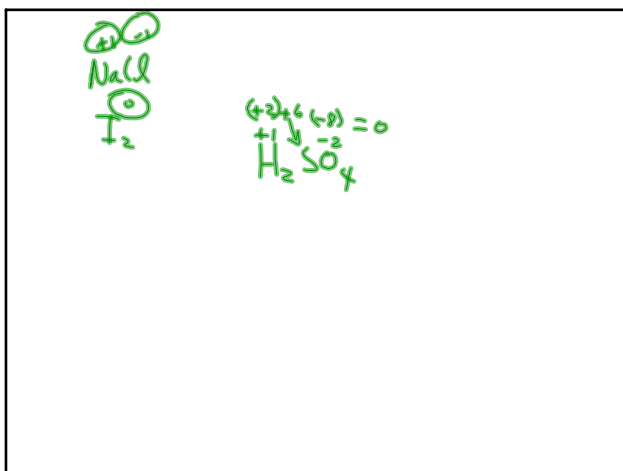
May 27-2:38 PM



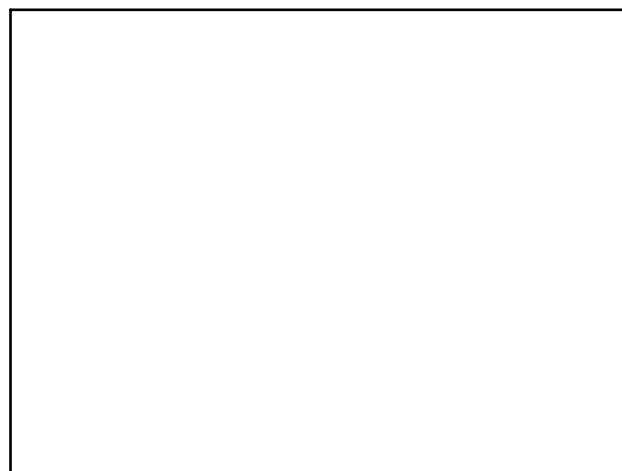
May 27-11:15 AM



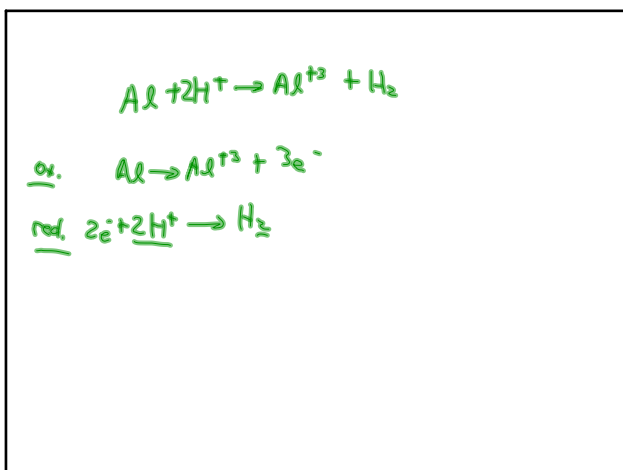
May 27-11:20 AM



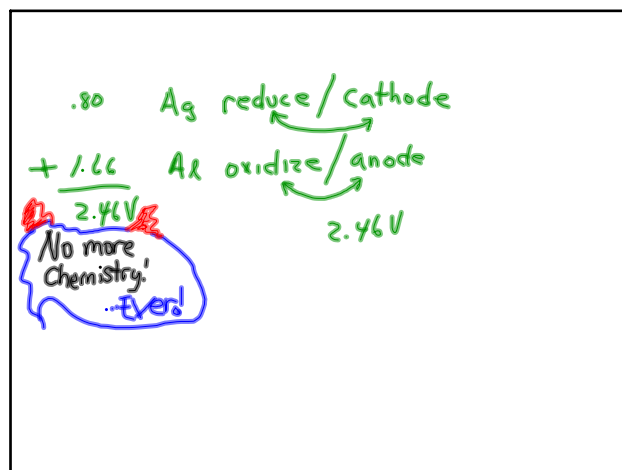
May 27-11:21 AM



May 27-2:48 PM



May 27-11:23 AM



May 27-11:26 AM